

RE^{CON}structions

Allen Keith
CONSTRUCTION CO.
WE MAKE IT RIGHT AGAIN®

Vol. 2 No. 1

Published for customers & friends of Allen Keith Construction Co.

Spring 1999

'Whatever Allen Keith promised, came true'

Larry Adelman, Co-owner, Adelman Truck Parts

For the first time in its 65-year history, Adelman's Truck Parts and Truck Sales Corporations suffered catastrophic loss in January 1999, when fire raged through the office building of the Canton, Ohio-based firm. Traced to an electrical short circuit in outdoor soffit lighting, the blaze burned hot enough to bend steel trusses on the roof of the concrete block building. It caused an estimated \$350,000 to \$400,000 in damage.



"The fire broke out at about 10 p.m. on a Thursday night. It was reported by a passerby and within six hours, by 3 or 4 a.m., it was under control," said Larry Adelman, co-owner of

Allen Keith board-up crews quickly secured Adelman Truck management offices against vandalism and weather.

Adelman's Truck Parts and Truck Sales Corporations. "It destroyed all the offices, but no inventory or equipment was

lost; 95 percent of office our records were saved," he added.

Continued on page 2

We put people's lives back together

*Daniel Keith Hanlon
President, Allen Keith
Construction*

Allen Keith Construction is pleased to serve as the leader in rebuilding area homes and businesses following disasters.

We feel it is also important to lead the way in disaster prevention by offering common-sense ideas and tips on home and business safety. Our columns, such as *Dave's LifeSavers*, are pro-active measures to enlighten "Re-Constructions" readers.

In addition, Dave DeMeo, Safety Consultant, is available to speak to your company or group. Dave's career spans fire

prevention, fire-fighting and helping people overcome catastrophes.

This issue of "Re-Constructions" features two case histories involving Canton-area businesses struck by fire. The offices of Adelman Truck Parts and Sales, which serves customers world-wide, were destroyed by fire. R. C. Miller, another long-time Canton firm, suffered fire damage to its plant and recycling areas. Allen Keith employees were able to "put both businesses back together" in a timely manner. We want to be your resource - for information that will keep your home and business safe, as well as for rebuilding should

disaster strike. Feel free to call on us anytime.

Please share this newsletter with others in your organization who may find the information useful and interesting. Or send us their name and address and we will include them on our mailing list. As always, I value your comments and suggestions regarding "Re-Constructions" and invite you to call, mail or fax them to me.



-Thank you.

Recycling resumes in 48 hours

The call to Allen Keith Construction came Friday night – burning garbage caused extensive smoke and structural damage to the R. C. Miller Refuse Service, Inc. recycling plant and offices in Northeast Canton.

The ceiling in the plant was black and buckled. The charred west wall of the recycle bin displayed a classic V-shaped image indicating the starting point of the fire. Steel beams were bent. The damage was severe, but recycling could continue if electrical service were restored.



Allen Keith employees replaced steel beams, electrical wiring, lighting, roof and siding material shown in these before, during and after photos.



Severe structural damage and smoke damage

Inside the business office, the situation was very different. Smoke had permeated everything from floor to ceiling—office space, restrooms, closets, meeting and conference rooms, locker facilities, lunchroom, hallways, aisles and stairways. Under these conditions, it would be impossible for the 50+ office employees to perform their work. On Friday night, the

office area was uninhabitable and the plant was out of service.

On Monday morning, R.C. Miller Refuse Service, Inc. resumed business as usual, in both the plant and in the office.

Business as usual Monday morning

Craig Omahne, Allen Keith Supervisor and Estimator, described: “We had 20 people working Friday night – all night – cleaning the offices. On Saturday and Sunday, there were 10 to 15 Allen Keith employees working constantly. The offices were open for business Monday morning.”



“In order for the plant to operate Monday morning,” said Craig, “it was necessary to repair major wiring damage. Our electricians also worked all weekend so the plant could continue its

recycling, uninterrupted, Monday morning.”

“Once these immediate concerns were handled,” said Craig, “we focused on ordering materials and cleaning the plant.”

Allen Keith employees make it right again

Does steam-cleaning a recycling plant sound counter-productive? Craig explains: “Steam cleaning the recycle bin (where garbage is dumped) and plant is



Interior view of damaged wall and roof (below), “made right again” (at left).



important to the people in the plant and in the office. The black smoke residue, which sometimes looks like black cobwebs, will slowly seep into the offices and cause ongoing problems. Customer satisfaction, from our experience, requires a thorough cleaning of the entire facility following this type of fire.”

Structural damage was severe, but not sufficient to close the plant. “We ordered steel beams right away,” said Craig, “to replace most of the west wall and about 10 percent of the plant’s roof. After installing the beams, the steel wall and the roof, material was replaced, along with a roof-top exhaust fan and most of the electrical wiring in the plant.”

Damage estimates were placed in the half-million-dollar range.

REC Constructions

Volume 2, No. 1

Spring 1999

Published as a service for our customers, suppliers and friends.

Editor: Dan Hanlon

Allen Keith
CONSTRUCTION CO
WE MAKE IT RIGHT AGAIN®

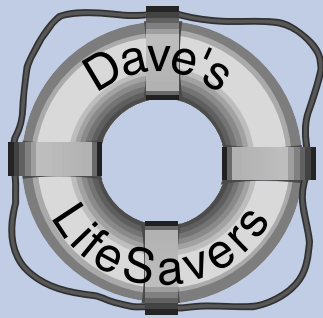
12933 Mogadore Avenue N.W.

Uniontown, Ohio 44685

Akron: (330) 699-5668

Canton: (330) 455-5451

Fax: (330) 699-1243 • 1-800-392-7000



We have had a tragic number of fire deaths in our area recently. Teach your family how to get out alive.

Have a home fire drill

Time yourself-you may have just two minutes. Learn how to get out of every upstairs room without using the stairs and hallways.

Have a plan-Draw a floor plan and discuss escape routes.

- Feel door for heat
- Brace doors
- Use chair legs to remove a window
- Learn how to drop from the window
- Once out of the house, never re-enter

Home Fire Safety Checklist

- Keep matches away from sources of heat.
- Make sure matches and smoking materials are out before disposing of them.

Home safety advice

No. 3 in a series from David DeMeo, Safety Consultant

- Always look for the UL label of the Underwriters' Laboratories when buying electrical equipment and appliances.
- Have enough electrical outlets in every room to avoid the need for multiple attachment plugs and long extension cords.
- Have special circuits for heavy duty appliances.
- Extension cords should be out in the open and not under rugs or through partitions.
- Keep your basement, closets and attic clear of rags, paper and other combustible materials.
- Keep your yard cleared of leaves, debris and combustible rubbish.
- Keep matches out of the reach of children.
- Important: Children learn by example as well as by instruction. Always set a good example in regard to fire safety.

Have Home Smoke Detectors

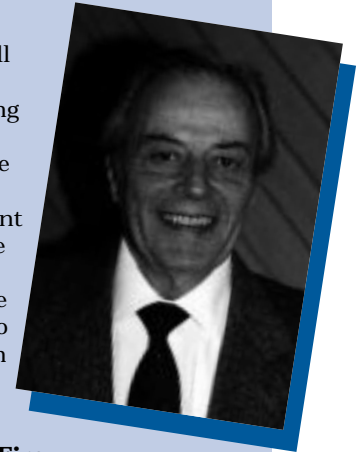
Smoke detectors are one of the most important safety features of your home. Properly installed, working smoke

detectors will give you the early warning you need to safely escape from a fire. One important way to make sure your detectors are working is to replace them every ten years.

Have Home Fire Extinguishers

Is your fire extinguisher ready for action? Extinguishers are the first line of defense against small fires in both residential and commercial properties.

Every 30 days a fire extinguisher is required to be given an inspection of "quick check" to be sure that it is accessible and will operate. This means verifying that the extinguisher is in its designated location, has not been operated or tampered with, and has not incurred any obvious physical damage that could prevent proper operation.

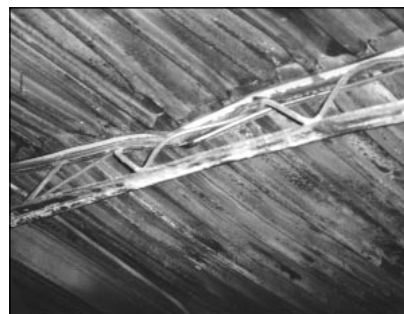


Adelman Fire

Continued from page 1

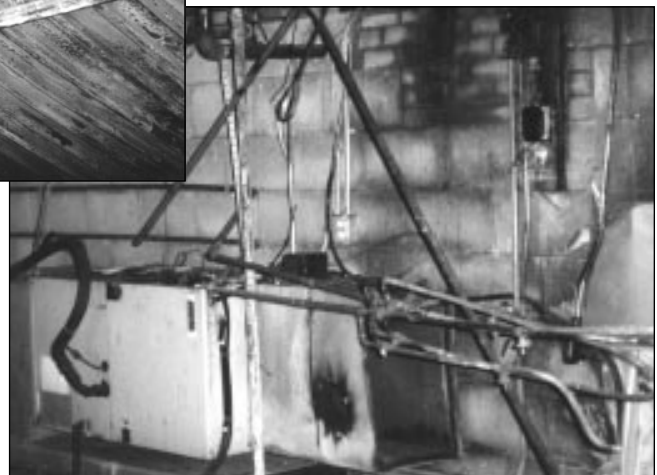
"Allen Keith Construction was pulling in as the fire engine was leaving," Larry continued. "We closed Friday, and by Monday, they had us back in business. They did an excellent job at the time and subsequently, cleaning up and getting rid of smoke and water damage. They stayed and got us up and going. They're still here, doing reconstruction- we're rebuilding and expanding the offices." Office employees are now working in a trailer on site.

How did Adelman's choose Allen Keith? "My brother (co-owner Carl Adelman) asked the fire chief for a recommendation, and he named several- Allen Keith was among them.



Left: 4000 degree heat bent steel beams at Adelman Truck.

Below: Electric boxes and wiring as well as pipes for heating and water supply were destroyed.



"Whatever they promised came true," said Larry. "I have nothing but the highest regard for Allen Keith Construction."

Adelman's truck parts and sales businesses serve the trucking industry domestically and internationally

with quality parts, trucks, trailers and equipment, including engines, transmissions and differentials.

Bob Myers: Production Manager, Safety Director, Problem Solver

Bob Myers is a problem solver for Allen Keith Construction (AKC), the company that specializes in damage restoration as well as remodeling. Similar to many other Allen Keith employees, Bob began his AKC career as a skilled worker (installing plaster and drywall) and became involved in round-the-clock emergency calls. He has since taken on greater responsibilities.

As Production Manager, Bob still fields those middle of the night calls. "Now, though, I call other employees to respond," Bob said. "I personally go out on emergency calls in special cases - mostly larger jobs such as the fire at Adelman Truck Sales."

Bob also wears the Safety Director's "hard-hat," with certificates from Stark Tech for completing more than 20 safety seminars over the past four years. He is trained in OSHA compliance, completed Bureau of Workers Compensation safety programs, and belongs to the Stark County Safety Council.

Bob's main duties with Allen Keith Construction are at the job site. "I make sure that field personnel have the materials required to perform their work, that each job progresses according to schedule, and that customers are satisfied with the completed work," he said.

Problem solver

"I travel to the job sites and solve problems," said Bob. "For example, cabinets were shipped to a job site in perfectly good boxes; upon inspection, there was a damaged cabinet inside the box. I informed our materials manager, who arranged for a new cabinet to be delivered. Many decisions are required on the job site; I am there to help our employees get their work done."

"My responsibilities include small and large jobs," Bob described, "from foundation to decorating. If

I see a problem on a large job, the estimator or site supervisor and I will come up with a solution."

"We use a new computer program to estimate how long a job should take," Bob said. "For example, the estimator enters the square feet of flooring to be installed and the computer calculates how long. If the work takes longer, there is a



Bob Myers, Production Manager for AKC, enjoys life away from the "office" at his lake-side home where he relaxes and enjoys boating, fishing, hunting and entertaining friends.

problem somewhere - at the management end or at the employee end. It is important to look at the all aspects of each job. The computer is not always perfect, but it sets guidelines."

Fire damage repair vs. framing

"Fire damage work is totally different than framing-type work," stated Bob. "With fires, we deal with smoke damage first. Some material can be cleaned and reused, others must be removed from the premises. There are special techniques and materials for cleaning and repainting so that the smell of smoke does not return. We guarantee our work... the odor of smoke is completely removed."

"Another difference is re-building something that is completely gone," continued Bob. "Roof lines, gables, ornate trim - it takes special talent to put it back the way it was. We ask for photos or descriptions from the owners, and use an architect if necessary. New construction is the easiest; remodeling and fire repair are the most difficult. Think of damage repair in terms of replacing a

structure without having it fall on you!"

Memorable experiences

"One of my most memorable jobs was repairing a garage," remarked Bob. "The owner drove in one end and out the other, taking toys, furnace, garage wall and car into the swimming pool. On another occasion, I found an owner's cat - singed, but alive - in the basement of a house the day after a fire. The owner could not believe the cat was alive and was overjoyed to see the pet."

Another interesting job was a recent fire at the Roadhouse restaurant. "The trick," according to Bob, "was to get them back in business rapidly. They were losing money every minute they were closed. We promised to have them back in business in seven days, which included approval of the health department.

We kept that promise."

Experience counts

Why should a customer choose Allen Keith Construction for damage restoration or remodeling? "Experience," stated Bob. "We try to understand the customer's needs and provide ideas on replacing or rebuilding based on our experience. We work with our customers to give them the most for their money."

Bob enjoys his work - he's been at it for for 18 years with Allen Keith, and over 30 years in the industry - and finds it very rewarding. "Meeting owners at their house and giving them the keys is very satisfying," said Bob. "People are happy because they end up with a better house than they had before."

Bob's Tips - fire hazards to avoid:

- Combustibles (clothing, newspapers, trash) stored near furnace, hot water tank.
- Electric outlets loaded with too many plugs and extension cords.
- Lighters and matches "around the house within kids' reach."